



# Test Plugs

## Test Plugs

15mm Extended Plug



EX15  
25028637



EX15SS  
25028541

8mm Extended Plug

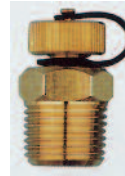


EX8  
25028626



EX8SS  
25028530

15mm Test Plug



ST15  
25028615



ST15SS  
25028519

8mm Test Plug



ST8  
25028604



ST8SS  
25028508

Thread	O/A Length (inc. Cap)		Max Probe (dia)	Product Types
	Standard	Extended		
8mm (1/4in) BSPT	38mm	75mm	4mm	ST8, ST8SS, EX8, EX8SS
15mm (1/2in) BSPT	41mm	77mm	4mm	ST15, ST15SS, EX15, EX15SS

- The extended plugs give approximately an extra 38mm (1 1/2in) for insulation.
- Other lengths available to order. Add to type number in mm.
- Standard Construction Types ST8, EX8, ST15, EX15.
- Stainless Steel Construction Types ST8SS, EX8SS, ST15SS, EX15SS.

### Technical

Maximum Pressure	35bar, 500PSI.
Temp range	-8 to +135°C (18 to 275°F).

*Suitable for low temperature hot water, chilled water and low temperature steam.*

### Material

Body, cap and retaining ring	Brass
Cap seal	Neoprene Rubber
Retaining strap	Ethylene Propylene Rubber
Core	Ethylene Propylene Rubber

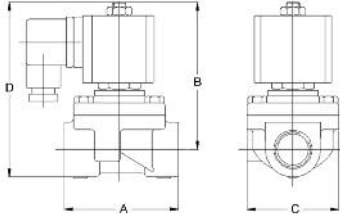
## Safety

Test Plugs and accessories are not recommended to be used on medium or high temperature hot water systems. Ethylene Propylene rubber is suitable for temperatures up to 135°C however if Plugs are used with injurious liquids or gases, protective clothing i.e. long sleeved gloves, face and eye protection should be worn.

# Solenoids

## Pilot Operated Solenoid Valves – FIG DCA Air, Light Oil, Water, 230Vac

Dimensions



Nominal Size	A	B	C	D	Weight Kg	Product Code
in mm	mm	mm	mm	mm	kg	
½ 15	69.5	80	75	97	0.9	20812106
¾ 20	69.5	80	75	97	0.9	20812117
1 25	85	80	75	126	1.2	20812128
1¼ 32	137	103	120	136	3	20812139
1½ 40	137	103	120	136	3	20812150
2 50	137	103	120	136	3.2	20812161

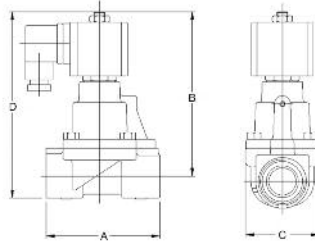
Technical Data	
Working voltage	Standard 230Vac (Others available)
Connections	BS21 BSPP Female
Maximum static pressure	50bar
Media temperature	-10 to +80°C
Ambient temperature	-10 to +50°C
Duty cycle	100% Continuously Rated
Protection class	IP65 with Plug to DIN43650 (Supplied)
Viscosity	Light Oil 100sec Redwood
Coil insulation	Class H

Materials of Construction	
Body	Brass/Bronze
Internals	Stainless Steel
Seals	Standard Nitrile Options EPDM & Viton

Size	Orifice	KV M <sup>3</sup> /Hr	MOPD	Media	Seal	Type	Product
in mm	mm		Bar AC	Temp	Material		Code
½ 16	16	4.2	0-14.0			DCA4	20812106
¾ 16	16	4.7	0-14.0	-10°C		DCA6	20812117
1 20	20	7.1	0-10.3	to	Nitrile	DCA7	20812128
1¼ 40	40	23.2	0-4.0	+80°C		DCA8	20812139
1½ 40	40	23.2	0-4.0			DCA9	20812150
2 40	40	25.8	0-4.0			DCA10	20812161

## Pilot Operated Solenoid Valves – FIG PCAX Steam, 230Vac

Dimensions



Size in	A mm	B mm	C mm	D mm	Weight kg	Product Code
½	68.5	105	65	122	1.2	20812172
¾	68.5	105	65	122	1.5	20812183
1	85	125	78	146	1.5	20812194
1½	117	133	73	179	3.1	20812770
2	146	145	95	209	5.2	20812781

### Technical Data

Working voltage	Standard 230Vac (Others available)
Electrical connection	PG9
Connections	BS21 BSPP Female
Maximum static pressure	20Bar
Media temperature	180°C Max
Ambient temperature	-10 to +50°C
Duty cycle	100% Continuously Rated
Protection class	IP65 with Plug to DIN43650 (Supplied)

### Materials of Construction

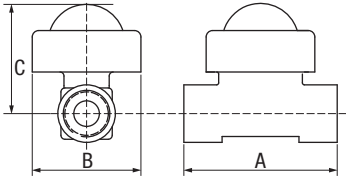
Body	Brass/Bronze
Internals	Stainless Steel/Copper Alloy
Seals	PTFE

Size in	Orifice mm	KV M <sup>3</sup> /Hr	Minimum OPD Bar	Maximum OPD AC	Maximum OPD DC	Maximum Media Temp	Seal Material	Type	Product Codes
½	16	4.2	0.3	8.6	4.8	180°C	PTFE	PCA4X	20812172
¾	16	5.4	0.3	8.6	4.8	180°C	PTFE	PCA6X	20812183
1	20	12.6	0.3	8.6	4.8	180°C	PTFE	PCA7X	20812194
1½	30	18.0	0.3	8.6	4.8	180°C	PTFE	PCA9X	20812770
2	32	21.0	0.3	8.6	4.8	180°C	PTFE	PCA10X	20812781

# Sight Flow Indicator

## BOSS Sight Flow Indicator

Dimensions



Size		A	B	C	Weight	Spinner	Ball
in	mm	mm	mm	mm	kg	Product Code	Product Code
3/8	10	76	60	54	0.5	26110006	26110050
1/2	15	76	60	54	0.6	26110017	26110061
3/4	20	83	60	54	0.6	26110028	26110072
1	25	89	60	70	1.1	26110039	26110083

### Technical Data

Connections	FBSPT
Max Pressure	7Bar
Temperature	100°C

### Materials of Construction

Body	Gunmetal BSEN1928 CB419K
Cover Ring	Gunmetal BSEN1928 CB419K
Glass	Soda Lime BS3463
Gaskets	Nitrile 'O' Ring BS128
Spinner	Glass Filled Nitrile
Ball	PTFE

Applications: oil, water

# Douglas Shower & Bath Thermostatic Controls

## Avance Elite recessed shower control

The Avance Elite thermostatic shower mixing valve is an attractive single sequential control and is ideally suited for single point shower applications where durability and high performance is essential. Its attractive appearance makes the Avance Elite a natural choice for houses, hotels, university halls of residence, health and elderly care, and sports and leisure facilities.



- Suitable for vented or unvented systems and with combi boilers.
- Single control operation through cold to maximum set temperature.
- Non-return valves fitted to hot & cold inlets  
**NOTE:** hot and cold inlets must be connected correctly. Top or bottom outlet 10L/min flow regulator fitted in outlet connector. Full spares kit available.
- The use of isolating ball valve strainers is recommended with these valves.

### Approved applications

- HP-S, LP-S and LP-SE with flow regulator fitted.
- Approved to DO8 specification number ETC/BC 104/0804.
- WRAS listed number 0406086.

### Technical Data

Thermostatic shower mixing valve licence	Type 3
Maximum temperature	90°C
Recommended pressure	0.15 to 3.0 Bar
Maximum pressure	0 Bar
Maximum differential	Compliant to DO8 specification (BS 7942)
Normal control temperature	41°C (adjustable)
Temperature differential	10°C (cold water failsafe)
Connections	Swivel unions 15mm compression

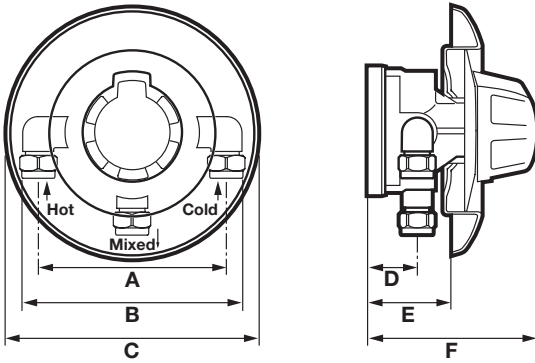
### Materials of Construction

Body	DZR brass
Cover	ABS plastic, chrome plate finish
Knob	ABS plastic, chrome plate finish
Valve/shroud	Noryl GFN3
Element	Copper

### Description

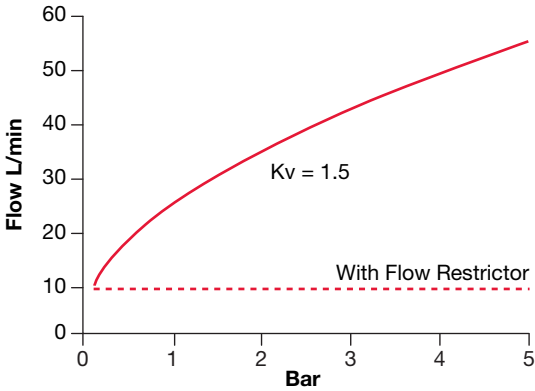
Description	Code numbers
Avance Elite– recess mounted, chrome finish	87160143
Avance Elite complete with Multi Mode flexible shower kit recess mounted, chrome finish.	87160313
Isolating ball valve strainer 15mm	available on request
Full spares kit available	available on request

Dimensions



A	B	C	D	E	F
mm	mm (max)	mm	mm	mm	mm
135-145	178	184	36.5	57-74	125

Capacity with open discharge  
(with no terminal fittings)



# Douglas Shower & Bath Thermostatic Controls

## Shower Time flow/Mechanical

Tempostop push button taps and valves conform to the highest standards and are specifically designed for use in a wide range of applications. They are precision engineered to provide effective timed control for water flow.

They are easy to use and the push button valves are preset to 8L/min and flow rates are fully adjustable on site.

Tempostop should be used in conjunction with a thermostatic mixing valve to provide safe water temperature control.

A circular wall plate is available for heavy duty use.

### Technical Data

Maximum temperature	80° C	
Recommended pressure	0.3 to 5.0 Bar	
Maximum pressure	10 Bar	
Nominal Time delay	15 sec	+5 sec / -5 sec
	30 sec	+5 sec / -10 sec
Connections	15mm / 1/2" BSP(M).	

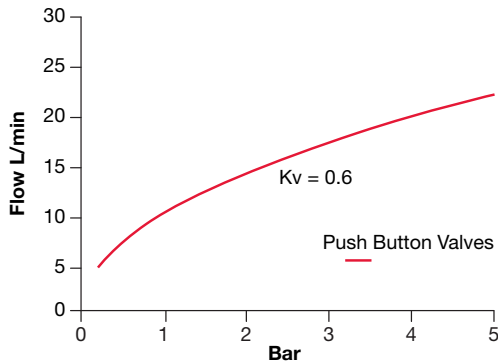
*Cartridge and spares kit available*

### Materials

Body	Brass (chrome plate finish)
Knobs	Polished chrome
Valve	Plastic (hostaform)
'O' Rings	EDPM rubber

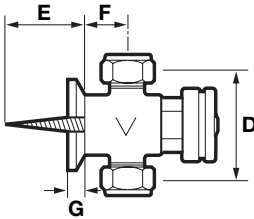
### Description

Description		Product Code
Tempostop exposed	15 sec	87160091
	30 sec	87160549
Tempostop recessed	15 sec	87160560
	30 sec	87160571
Circular wall plate		87160582
CP Riser pipe	15mm x 1m	87160121

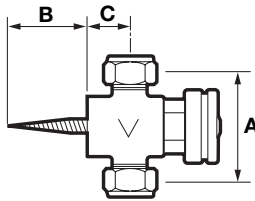


Dimensions

Tempostop exposed push button control

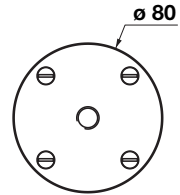


15 second

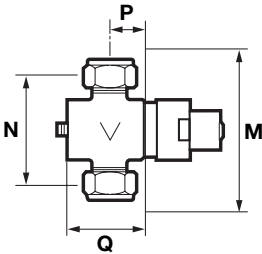


30 second

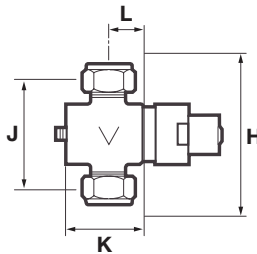
Heavy duty wall plate



Tempostop recessed push button control



15 second



30 second

Tempostop exposed push button control

	A mm	B mm	C mm	D mm	E mm	F mm	G mm	Product Code
15 second	97	42	30					87160091
30 second				62	41	27	7	87160549

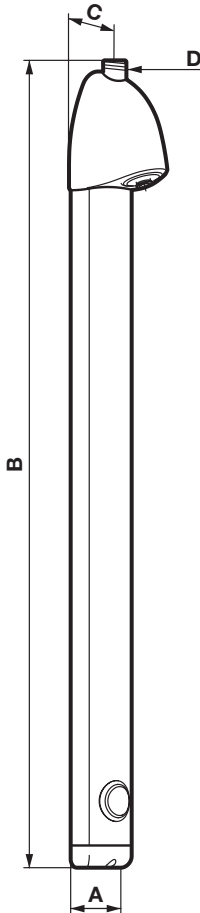
Tempostop recessed push button control

	H mm	J mm	K mm	L mm	M mm	N mm	P mm	Q mm	Product
15 second					90	62	48	23	87160560
30 second	130	95	55	25					87160571

# Douglas Shower & Bath Thermostatic Controls

## Sporting shower panel

Designed for use in Health and Fitness, Public Sport Centres, Swimming Pools, Schools and Colleges, Halls of Residence and Factories, the Sporting shower panel combines style and performance with durability and water saving. The Sporting panel also offers an attractive solution for domestic shower room. The Sporting panel should always be used with a Thermostatic mixing valve to provide users with safe water temperatures and prevent scalding. Douglas provides a large range of Thermostatic mixing valves for individual or group showering use.



- Pre-assembled sporting shower panel with vandal proof showerhead with automatic shut off after 30 seconds (nominal +5 / -10 secs.) and regulated flow of 8 L/min.
- Scale proof nozzle jet with adjustable spray angle
- Supplied with non return valve and filter.

The Sporting shower panel should be used in conjunction with a thermostatic mixing valve for safe water temperature control.

### Technical Data

Water supply temperature	38 to 43°C
Recommended pressure	1.0 to 3.0 Bar
Maximum pressure	5.0 Bar
Flow Rate at 3Bar	8 L/min
Connections	Top entry inlet ½" BSP(M) Isolating ball valve ½" BSP(F) swivel x 15mm compression

### Materials of Construction

Shower head	Brass, satin chrome finish
Panel body	Anodised aluminium finish

### Description

Description	Product Code
Sporting shower panel, anodised aluminium finish	87160261
Isolating stop valve ½" BSP(F) swivel x 15mm	87160527

### Dimensions

A	B	C	D
mm	mm	mm	Fitting
70	1020	21	½in BSP(M)

## Douglas Shower & Bath Thermostatic Controls

### Anti-vandal Shower Heads

Douglas shower fittings conform to the highest standards and are specifically designed for use with Douglas thermostatic and mechanical shower valves. They are precision engineered to provide effective showering at all pressures and form an integral part of the Douglas Controls shower package for all applications.

#### Technical Data

Large anti-vandal shower head for rear or bottom entry		Kv 0.72
	Connections	15mm
Small anti-ligature shower head for rear entry		Kv 0.93
	Connections	½in BSP(M)
Crosswall anti-ligature shower head 200mm for rear entry		Kv 0.93
	Connections	½in BSP(M)

#### Materials

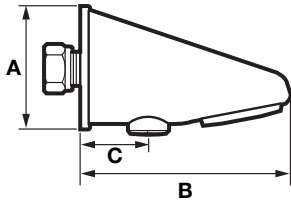
Bodies	brass, chrome plate finish
Spray plate	ABS

#### Description

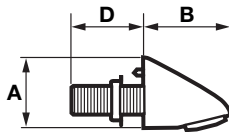
	Product Code
Large anti-vandal shower head	87160047
Small anti-ligature shower head	87160058
Crosswall anti-ligature shower head > 200mm	available on request

Dimensions

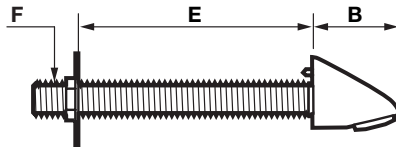
**Large anti-vandal shower head**



**Small anti-vandal shower head (anti-ligature)**



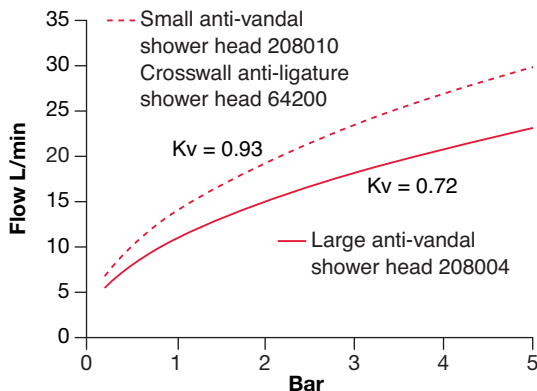
**Small anti-vandal shower head (crosswall)**



Large anti-vandal shower head	A mm	B mm	C mm	D mm	E mm	F Fitting	Product Code
	60	100	35				87160047

Small anti-vandal shower head							
anti-ligature	47	52		40		½in BSP(M)	87160058
crosswall	47	52			200	½in BSP(M)	on request

**Capacity with open discharge**



# Douglas Shower & Bath Thermostatic Controls

## Group Thermostatic Mixing Valves

TM28 and 25 Thermostatic mixing valves are the obvious choice where safe controlled water temperatures are required to prevent accidental scalding in group showers and hand wash installations. They are also ideal where low pressures are a problem.

- TM28 mixing valve has 28mm compression connections and is supplied with two 28mm insert non-return valves
- TM25 mixing valve has 22mm compression connections and is supplied with two 22mm insert non-return valves.
- Full spares kit available. The use of isolating ball valve strainers is recommended with these valves.
- Complies with BSEN1287, BSEN1111 (Cold water failure).
- UK WFBS listed number 9504027.

### Technical Data

Maximum temperature	95° C
Recommended pressure	0.2 to 5 Bar
Maximum pressure	10 Bar
Maximum differential	4 - 1
Temperature adjustment	30 – 49°C (other ranges available)
Normal control temperature	43° C

### Materials

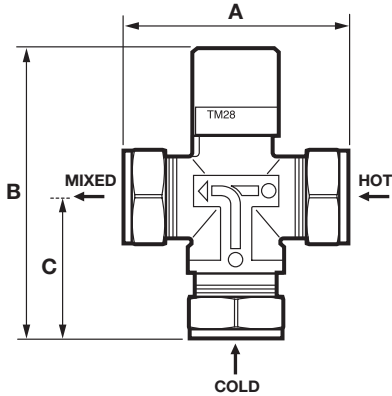
Body	DZR Brass, chrome plate finish
Valve	Noryl GFN3
Sleeve	Noryl GFN3
Spring	Stainless steel
Element	Copper
Top Cover	Plastic

### Description

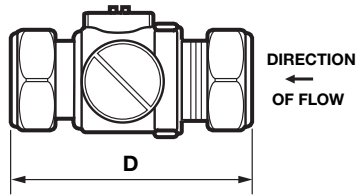
Description	Product Code
22mm TM25 Thermostatic mixing valve	87160014
28mm TM28 Thermostatic mixing valve	87160003
22mm Keysafe isolating ball valve strainer	87160036
28mm Model 623 isolating ball valve strainer	87160025

Dimensions

**TM28/TM25 Thermostatic mixing valve**



**Keysafe isolating ball valve strainer  
15mm & 22mm size  
(Closed Position Illustrated)**



Thermostatic Mixing Valve	A mm	B mm	C mm	D mm	Product Code
TM25	70	120	50		87160014
TM28	70	120	50		87160003

Keysafe Isolating Ball Valve Strainer					
15mm				65	87160036
22mm				70	87160025

**Capacity with open discharge**

